

Time and Date	Level (in) Mean	Velocity (ft/s) Mean	Discharge (mgd) Mean
6/21/2005 0:00	3.77	3.3	0.345
6/21/2005 0:15	3.16	2.69	0.224
6/21/2005 0:30	2.99	2.54	0.196
6/21/2005 0:45	3.17	2.72	0.234
6/21/2005 1:00	3.6	3.19	0.318
6/21/2005 1:15	2.88	2.41	0.177
6/21/2005 1:30	2.53	2.01	0.123
6/21/2005 1:45	2.39	2.2	0.125
6/21/2005 2:00	2.27	1.91	0.101
6/21/2005 2:15	2.26	1.74	0.091
6/21/2005 2:30	2.18	1.83	0.091
6/21/2005 2:45	2.13	1.8	0.087
6/21/2005 3:00	1.98	1.7	0.074
6/21/2005 3:15	1.93	1.59	0.066
6/21/2005 3:30	1.95	0.94	0.040
6/21/2005 3:45	1.94	0.72	0.031
6/21/2005 4:00	1.91	1.03	0.043
6/21/2005 4:15	1.87	1.47	0.059
6/21/2005 4:30	1.85	1.35	0.054
6/21/2005 4:45	1.88	1.42	0.057
6/21/2005 5:00	1.88	1.05	0.042
6/21/2005 5:15	1.88	1.22	0.049
6/21/2005 5:30	2.04	1.57	0.071
6/21/2005 5:45	3.66	2.91	0.336
6/21/2005 6:00	3.89	3.45	0.376
6/21/2005 6:15	3.13	2.53	0.207
6/21/2005 6:30	2.88	2.5	0.183
6/21/2005 6:45	2.6	2.34	0.149
6/21/2005 7:00	2.65	2.08	0.137
6/21/2005 7:15	2.8	2.4	0.169
6/21/2005 7:30	2.8	2.22	0.156
6/21/2005 7:45	3.7	3.18	0.339
6/21/2005 8:00	3.74	3.35	0.346
6/21/2005 8:15	3.24	2.94	0.252
6/21/2005 8:30	3.26	2.73	0.236
6/21/2005 8:45	3.12	2.67	0.218
6/21/2005 9:00	3.19	2.76	0.231
6/21/2005 9:15	3.25	2.57	0.221
6/21/2005 9:30	4.16	3.5	0.429
6/21/2005 9:45	4.91	4.17	0.605
6/21/2005 10:00	4.24	3.42	0.416
6/21/2005 10:15	5.09	4.31	0.652
6/21/2005 10:30	5.26	4.4	0.692
6/21/2005 10:45	5.29	4.5	0.712
6/21/2005 11:00	5.3	4.44	0.704
6/21/2005 11:15	4.53	3.77	0.499
6/21/2005 11:30	3.75	3.37	0.351
6/21/2005 11:45	3.41	2.96	0.272
6/21/2005 12:00	3.59	3.43	0.336
6/21/2005 12:15	3.28	2.78	0.242
6/21/2005 12:30	3.15	2.61	0.215
6/21/2005 12:45	3.97	3.31	0.378
6/21/2005 13:00	3.61	3.13	0.313

Enter Site Name > Any City USA

Flow Rate

Velocity

Depth

Diameter: 18

Site Summary Sheet

Site **Any City USA**
Diameter: **18** **Inches**
 Period 6/21/2005 to 6/27/2005

Depth of Flow

(inches)

Average	3.29
Maximum	5.56
Minimum	1.70
Max d/D	31%

Flow velocity

(feet per second)

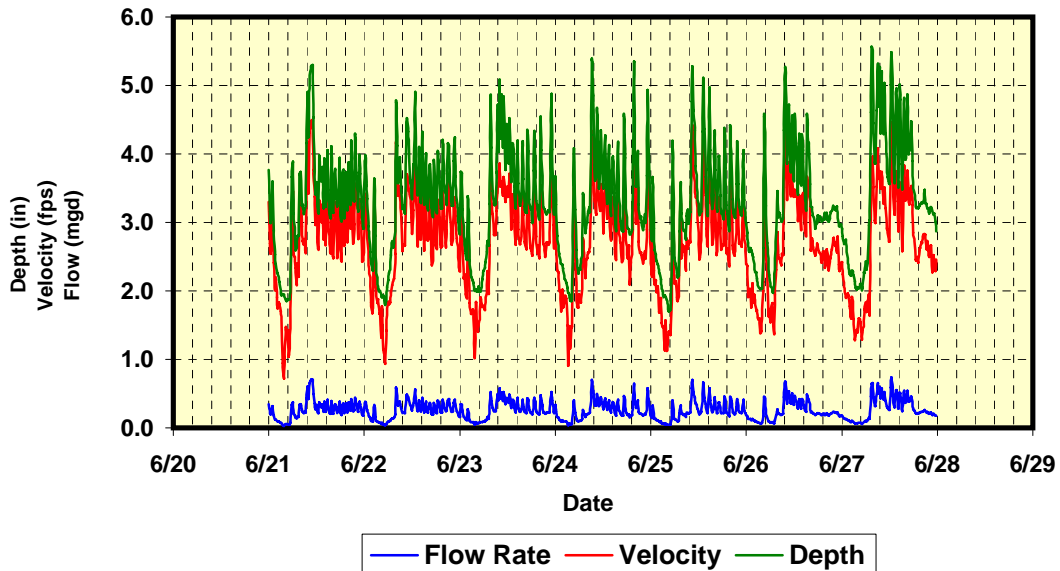
Average	2.71
Maximum	4.50
Minimum	0.72

Flow Rate

(million gallons per day)

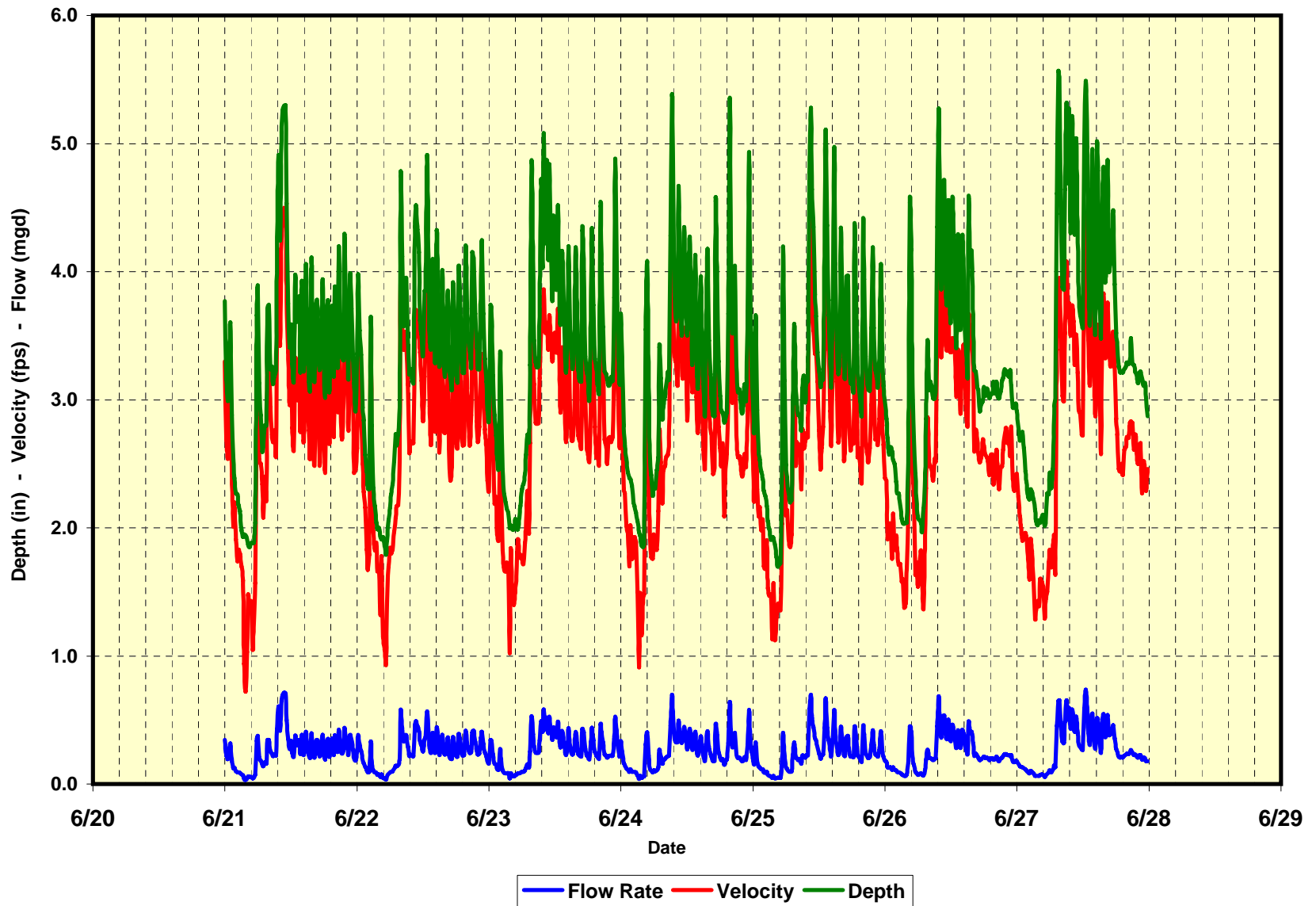
Average	0.26
Maximum	0.74
Minimum	0.03
 Peak Factor	 2.85

Flow Rate - Velocity - Depth



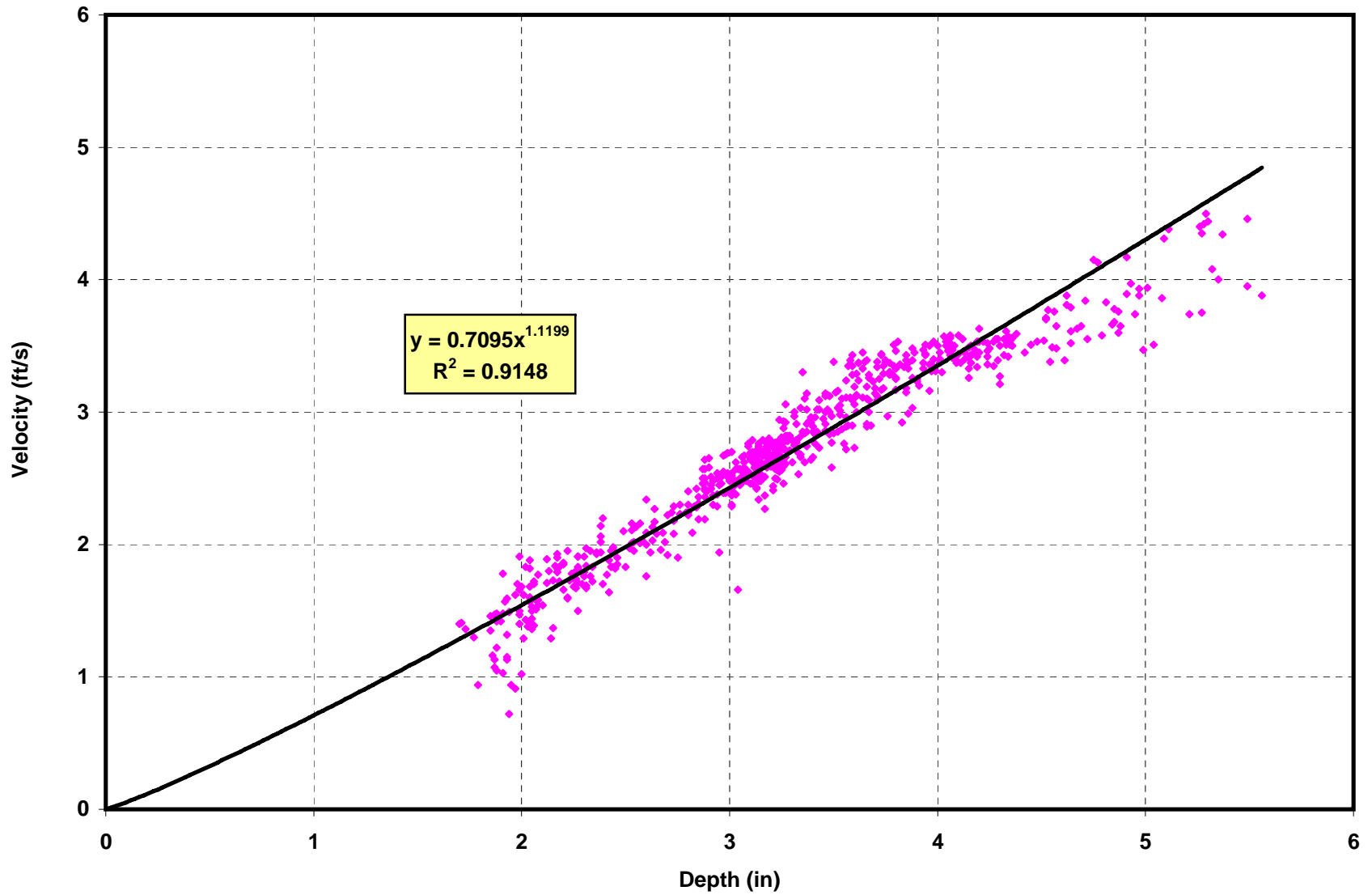
Flow Rate - Velocity - Depth

Any City USA



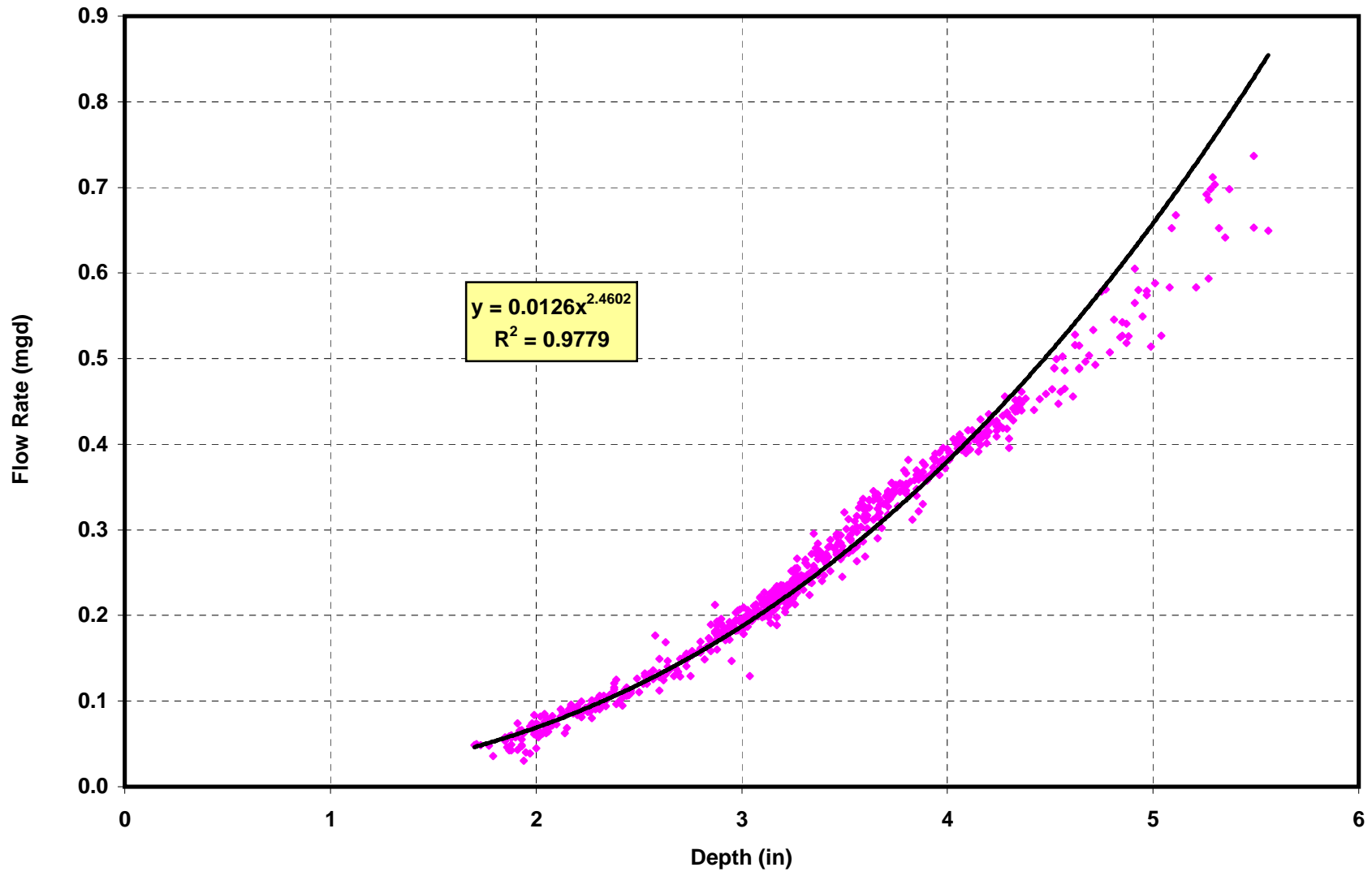
Velocity vs. Depth Scattergraph

Any City USA



Flow Rate vs. Depth Scattergraph

Any City USA



Depth of Flow - Tabular Data Output

Site ID Any City USA

Start Date 6/21/2005

End Date 6/27/2005

Hour	Tue 6/21/2005	Wed 6/22/2005	Thu 6/23/2005	Fri 6/24/2005	Sat 6/25/2005	Sun 6/26/2005	Mon 6/27/2005
0-1	3.27	3.56	3.37	3.09	3.08	2.78	2.77
1-2	2.85	2.70	2.65	2.44	2.49	2.57	2.54
2-3	2.21	2.76	2.78	2.21	2.19	2.27	2.26
3-4	1.95	2.13	2.12	1.96	1.94	2.05	2.11
4-5	1.88	1.94	2.02	2.84	1.76	3.35	2.07
5-6	2.37	1.91	2.06	2.61	2.91	2.65	2.15
6-7	3.13	2.32	2.41	2.41	2.34	2.04	2.54
7-8	2.99	2.76	3.38	3.10	2.95	2.71	4.68
8-9	3.34	4.07	3.52	3.13	2.87	3.09	4.21
9-10	3.88	3.47	3.94	4.59	3.10	3.93	4.90
10-11	4.97	3.79	4.57	3.98	4.46	4.45	4.80
11-12	4.25	3.90	4.32	3.86	3.80	4.04	3.85
12-13	3.50	3.99	4.15	3.82	3.16	4.02	4.76
13-14	3.56	3.74	3.82	3.61	4.37	3.77	4.24
14-15	3.67	3.71	3.65	3.52	3.80	3.83	4.33
15-16	3.45	3.49	3.55	3.43	3.53	3.99	4.12
16-17	3.45	3.46	3.29	3.14	3.66	3.28	4.24
17-18	3.47	3.42	3.73	3.67	3.61	2.99	4.15
18-19	3.41	3.54	3.57	2.92	3.59	3.07	3.36
19-20	3.34	3.50	3.36	3.69	3.06	3.06	3.23
20-21	3.71	3.46	3.80	3.86	3.70	3.06	3.34
21-22	3.60	3.83	3.17	3.10	3.48	3.16	3.24
22-23	3.56	3.66	3.32	2.99	3.27	3.21	3.18
23-24	3.27	3.26	3.87	3.97	3.47	2.99	3.03
Average	3.29	3.26	3.35	3.25	3.19	3.18	3.50
Max Hr. Mean	4.97	4.07	4.57	4.59	4.46	4.45	4.90
Min Hr. Mean	1.88	1.91	2.02	1.96	1.76	2.04	2.07
Inst. Max	5.30	4.91	5.08	5.37	5.28	5.27	5.56
Inst. Min	1.85	1.79	1.99	1.85	1.70	1.97	2.01

All Values in Inches

Velocity - Tabular Data Output

Site ID Any City USA

Start Date 6/21/2005

End Date 6/27/2005

	Tue	Wed	Thu	Fri	Sat	Sun	Mon
Hour	6/21/2005	6/22/2005	6/23/2005	6/24/2005	6/25/2005	6/26/2005	6/27/2005
0-1	2.81	2.99	2.87	2.66	2.56	2.18	2.19
1-2	2.45	2.19	2.07	1.92	2.07	1.93	1.93
2-3	1.82	2.26	2.18	1.86	1.70	1.80	1.77
3-4	1.24	1.83	1.53	1.27	1.41	1.49	1.42
4-5	1.32	1.48	1.56	2.30	1.31	2.66	1.53
5-6	1.69	1.28	1.77	2.03	2.32	2.05	1.49
6-7	2.71	1.86	1.84	1.94	2.00	1.68	1.83
7-8	2.47	2.24	2.65	2.48	2.58	2.12	3.22
8-9	2.92	3.66	3.03	2.57	2.55	2.46	3.26
9-10	3.25	2.95	3.28	3.75	2.70	3.23	3.75
10-11	4.16	3.14	3.60	3.35	3.76	3.72	3.53
11-12	3.64	3.41	3.47	3.39	3.36	3.52	2.94
12-13	3.03	3.33	3.53	3.27	2.66	3.40	3.75
13-14	3.04	3.14	3.19	3.16	3.70	3.16	3.47
14-15	3.18	3.14	3.07	3.08	3.20	3.26	3.31
15-16	2.92	2.94	2.91	2.93	3.03	3.34	3.25
16-17	2.87	2.88	2.78	2.70	3.00	2.83	3.47
17-18	3.04	2.78	3.16	3.06	3.01	2.58	3.36
18-19	2.91	2.98	2.90	2.46	3.10	2.57	2.62
19-20	2.94	2.87	2.82	3.00	2.51	2.47	2.54
20-21	3.27	2.90	3.23	3.30	3.09	2.46	2.77
21-22	3.06	3.25	2.64	2.59	2.91	2.57	2.69
22-23	3.15	3.01	2.84	2.48	2.79	2.68	2.52
23-24	2.81	2.71	3.18	3.31	2.97	2.46	2.42
Average	2.78	2.72	2.72	2.70	2.68	2.61	2.71
Max Hr. Mean	4.16	3.66	3.66	3.75	3.76	3.72	3.75
Min Hr. Mean	1.24	1.28	1.28	1.27	1.31	1.49	1.42
Inst. Max	4.50	4.15	3.86	4.34	4.42	4.35	4.46
Inst. Min	0.72	0.94	1.02	0.91	1.13	1.37	1.29

All Values in Feet per Second (fps)



Flow Rate - Tabular Data Output

Site ID Any City USA

Start Date 6/21/2005

End Date 6/27/2005

Hour	Tue 6/21/2005	Wed 6/22/2005	Thu 6/23/2005	Fri 6/24/2005	Sat 6/25/2005	Sun 6/26/2005	Mon 6/27/2005
0-1	0.250	0.299	0.269	0.221	0.210	0.152	0.152
1-2	0.186	0.148	0.136	0.112	0.124	0.121	0.119
2-3	0.092	0.170	0.164	0.094	0.086	0.095	0.093
3-4	0.053	0.089	0.074	0.054	0.059	0.068	0.067
4-5	0.053	0.063	0.070	0.208	0.048	0.275	0.071
5-6	0.125	0.054	0.082	0.135	0.209	0.139	0.073
6-7	0.229	0.101	0.106	0.111	0.110	0.076	0.113
7-8	0.200	0.155	0.267	0.204	0.210	0.160	0.472
8-9	0.263	0.427	0.293	0.211	0.186	0.198	0.398
9-10	0.372	0.280	0.371	0.514	0.218	0.385	0.546
10-11	0.618	0.345	0.481	0.380	0.505	0.484	0.502
11-12	0.456	0.375	0.433	0.369	0.356	0.405	0.317
12-13	0.293	0.384	0.417	0.353	0.220	0.386	0.541
13-14	0.298	0.330	0.344	0.317	0.472	0.333	0.429
14-15	0.326	0.326	0.314	0.300	0.352	0.352	0.417
15-16	0.277	0.282	0.286	0.280	0.297	0.381	0.392
16-17	0.271	0.275	0.245	0.223	0.308	0.248	0.424
17-18	0.290	0.263	0.332	0.317	0.306	0.198	0.400
18-19	0.275	0.295	0.295	0.184	0.312	0.205	0.236
19-20	0.267	0.277	0.256	0.331	0.200	0.196	0.217
20-21	0.338	0.272	0.348	0.359	0.323	0.195	0.246
21-22	0.306	0.352	0.219	0.209	0.282	0.213	0.230
22-23	0.311	0.310	0.255	0.191	0.243	0.226	0.211
23-24	0.247	0.237	0.354	0.382	0.285	0.190	0.190
Average	0.266	0.255	0.267	0.252	0.247	0.237	0.286
Max Hr. Mean	0.618	0.427	0.481	0.514	0.505	0.484	0.546
Min Hr. Mean	0.053	0.054	0.070	0.054	0.048	0.068	0.067
Inst. Max	0.712	0.578	0.583	0.698	0.698	0.686	0.737
Inst. Min	0.031	0.036	0.045	0.039	0.045	0.062	0.057

All Values in Million Gallons per Day (mgd)